



CASSETTE AWNING art_01and art_02 | *Innovative product design for terrace and balcony*



ONE-OFFS IN HARDWARE AND COLOUR

Bespoke sunshade - made to measure for you

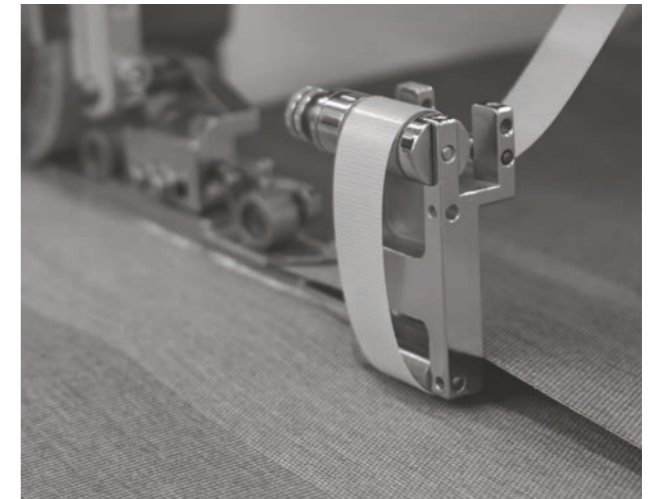
Enjoy reliable sun protection on your balcony or your terrace. We make your awning made to measure just as you want it: you get a one-off in terms of fabric, size and hardware, that is functional and aesthetically convincing. Therefore we combine modern technology with our expert know-how. We use high quality materials, which we process perfectly.

Our aim is to make your awning timeless beautiful and technically first class - innovative, lasting and durable. To this end our engineers and designers work continuously on enhancing the awning hardware. Since 1930, the name MHZ stands therefore for sun protection systems that fulfil the highest requirements and aspirations.

Our products' special qualities and features pass every test of daily use.



Excellent Products, manufactured progressively



Proven welding method: technology and craftsmanship interdigitate perfectly



MHZ art_01 and art_02 DESIGN HIGHLIGHTS

Functional and aesthetic

The art_01 and art_02 cassette awnings from MHZ are visually clearly related. Both models feature modern cubic design and harmonious transitions. Thanks to their closed construction and modern styling, they merge inconspicuously into the layout of the building

exterior. Functional design highlights - for your modern protection from the sun. Quality made in Germany.



Model 48-1160

Name Cassette awning art_02

Hardware Anthracite, DB 703

Blind fabric Acrylic, 1-8046



Model 48-1160

Name Cassette awning art_02

Hardware Silver, RAL 9006

Blind fabric Acrylic, 1-8022

SUN PROTECTION IN LARGE FORMAT

So that your time spent outside
becomes something great

Probably the clearest difference between the art_01 and art_02 cassette awnings is their maximum size.

With its maximum measurements of five metres in width and three and half metres of projection, the art_01 already shades large areas.

The art_02 goes a step further: with a width of seven metres and projection of four, it provides even larger areas of shade. As a linked unit, maximum measurements of fourteen by four metres are even possible. Similar to the art_01, the larger art_02 manages up to 7 meters width with only 2 joint arms.

Both awnings can be operated easily by crank, or by an electric drive with the use of a switch or a remote control.

The benefits for you at a glance

art_01:

- Sleek, purist design
- Low installed height of 13 cm
- Compact cassette dimensions of 24 x 13 cm
- Invisible fixing points
- Minimal gap from wall or ceiling of 1 cm
- Pitch seamlessly adjustable from 5°- 45°

art_02:

- Elegant, purist design
- Low installed height of 17.5 cm
- Compact cassette dimensions of 26.5 x 17.5 cm
- Invisible fixing points
- Modest wall clearance of 1.5 cm
- Pitch seamlessly adjustable from 5°- 35°
- Optional: LED light strip with transformer and RTS receiver integrated in the cassette

COLLECTION

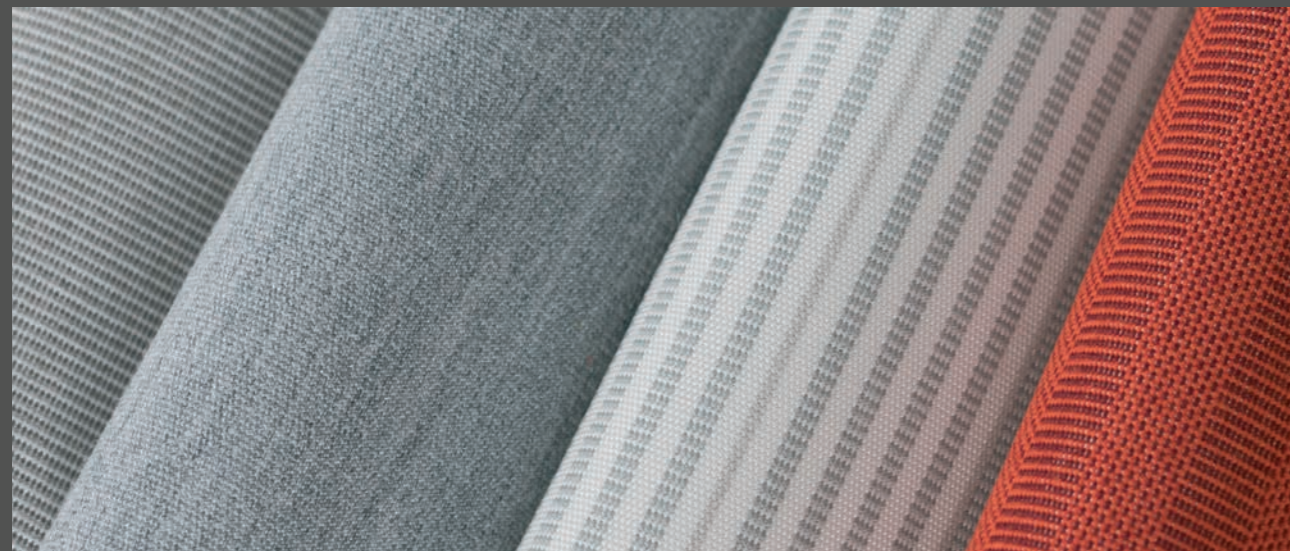
Designed as you wish

For the choice of your awning the fabric plays an equally important role as the hardware. It allows you to design your outdoor area just as you wish: choose between discreet or powerful colors, narrow or wide block stripes and fascinating effects - single colors or with design.

All fabrics are light - and colorfast as well as dirt and water repellent. We seal permanently all seams with our proven welding technology. That gives your awning exceptional durability for long-lasting pleasure and optimal UV protection. Whether as a

functional element or as a design element: In conjunction with an awning fabric from our collection your cassette awning art_01 or art_02 is individual and also an aesthetic eye-catcher.

For you and the environment: the fabrics we use come from Europe and are certified to the Oeko-Tex® Standard 100, confirming that they contain no substances harmful to health.



You will find the right awning fabric for you in our latest MHZ awning collection.

Hardware colours for art_01 and art_02

- White (RAL 9016), anthracite (DB 703), silver (RAL 9006)
- Custom colours as per classic RAL chart, on request



Model 08-2913
Name art_01 cassette awning
Hardware Anthracite, DB 703
Blind fabric Acrylic, 1-8021



INSTALLATION

**Practically floating next to wall and ceiling
with minimal installation area**

Both the art_01 cassette awning and the art_02 are ideal for installation on wall or ceiling. When fixing direct to concrete the installation materials are hidden behind the fitted cassette. Both awnings appear to float in their installed position and thus merge ideally into the overall look of your outside area. The art_01 is also ideal for recess installation.

The art_01 and art_02 cassette awnings can be fixed via just two support points. In the case of the art_01 the two side caps take on the function of the mounting brackets. It is thus sufficient to fix the cassette only at the two outer points.

In order to securely fix the art_02 even with maximum dimensions, all you need is two awning mounting brackets, which, depending on awning size, are positioned 21 to 80 cm indented from the outside.

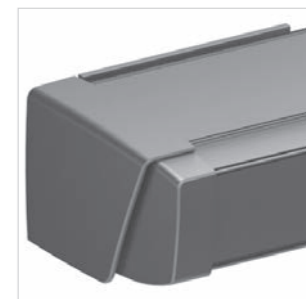
| 11

Model 48-1160
Name Cassette awning art_02
Hardware Anthracite, DB 703
Blind fabric Acrylic, 1-8246

art_01:
Cassette dimensions:
240 x 130 mm



art_02:
Cassette dimensions:
265 x 175 mm





Subject to technical changes and colour deviations. 07-8149-408 / 07.2019